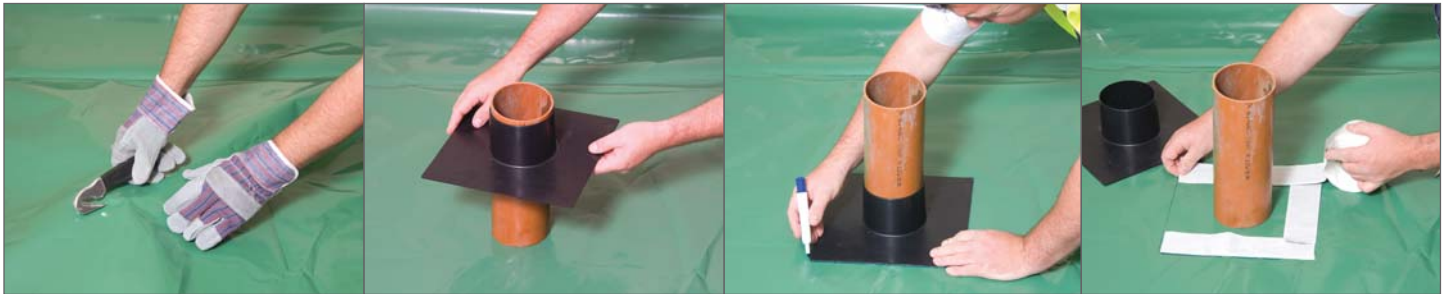


INSTALLATION ADVICE

HOW TO MAKE A GAS-TIGHT SEAL WHEN A PIPE PASSES THROUGH THE MEMBRANE

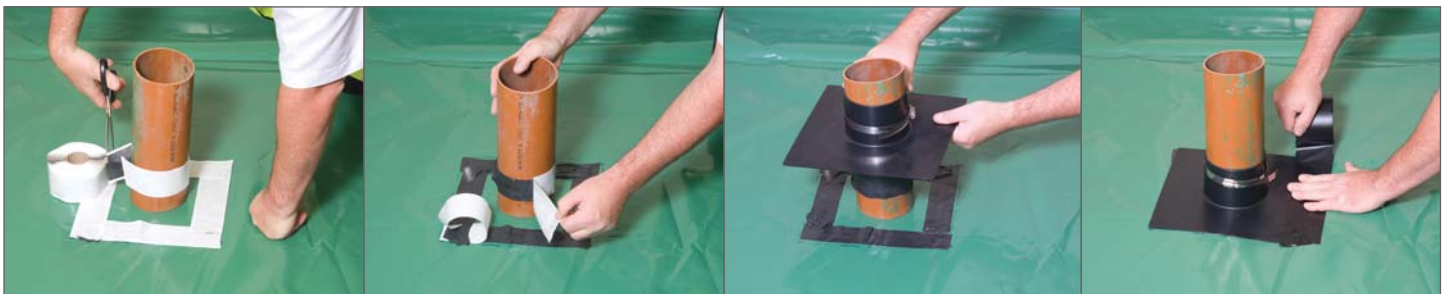


1
Cut a hole in the membrane to expose the pipe, ensure the hole fits the pipe as close as possible.

2
When the membrane and pipe is in position, place the Radbar Top Hat over the pipe. (110mm Diameter Top Hat is the most common, alternative sizes are available).

3
When the top hat is in place, mark the membrane around the top of the pipe and around the horizontal skirt of the top hat unit.

4
Remove the Top Hat unit and apply 4 lengths of double sided Radbar Tape to the area marked on the membrane. Ensuring the tape overlaps on the corners.



5
Below the point marked on the pipe. Apply one length of the tape around the pipe.

6
Remove the protective paper from the double sided Radbar Tape.

7
Replace the Top Hat unit over the pipe. Ensure that the base of the Top Hat is free from any dust, dirt or grease. Apply pressure to the Top Hat and seal the horizontal skirt to the membrane.

8
When the Top Hat unit is in place, using the Radbar Single Sided Tape, seal the edge of the horizontal skirt to the membrane. Then secure the Top Hat to the pipe using the jubilee Clip.

