

# Newton CDM System

Ancillaries

Rev 3.3 - 3<sup>rd</sup> August 2023

## INTRODUCTION

*This data sheet is home to the products that do not require their own data sheet but are nonetheless critically important for the correct installation of Newton CDM System. Many of them are used with other Newton Systems and they will also be included within the Ancillary data sheet where this occurs.*

### NEWTON CDM MULTIPLUG (A1 /A32)

The fixing plug for securing Newton CDM System membranes to the wall and for providing a fixing point for 5 mm screws and the Newton Helifix Wall Tie.



### NEWTON CDM NUSEAL PLUGS (A2)

Slightly longer than the MultiPlug, supplied without a sealing washer and used with a bead of CDM Rope as the seal for fixing the membrane to vaulted ceilings and sloping soffits. A fixing point for 6 mm screws.



### NEWTON CDM BRICK PLUGS (A3)

The fixing plug for securing Newton CDM membranes to brickwork and concrete. Application requires drilling of 10mm diameter hole through the membrane and into the brick and concrete.



### NEWTON HELIFIX WALL TIES (WT 155, 170, 195, 220, 245, 270, 295, 325)

A range of wall ties designed by Helifix to fix into the head of the Newton MultiPlug for the tying in of block or brick internal walls that are built in front of the Newton CDM System waterproofing system. Available in lengths from 155 mm to 325 mm, they can be supplied with a special hand tool\* (WTT) that ensures they are hammered into the MultiPlug without bending the tie and to the correct depth within the plug. The ties can also be used to fix insulation and can be supplied with Newton Insulation Clips\* (WTD) to ensure accurate spacing of the insulation within the cavity.



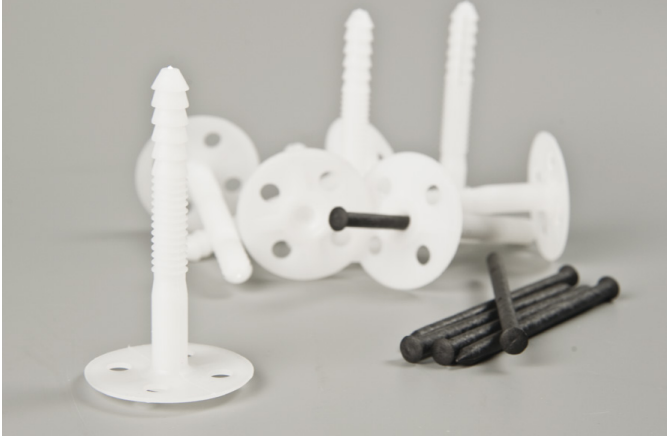
\*additional cost

# Newton CDM System

## Ancillaries

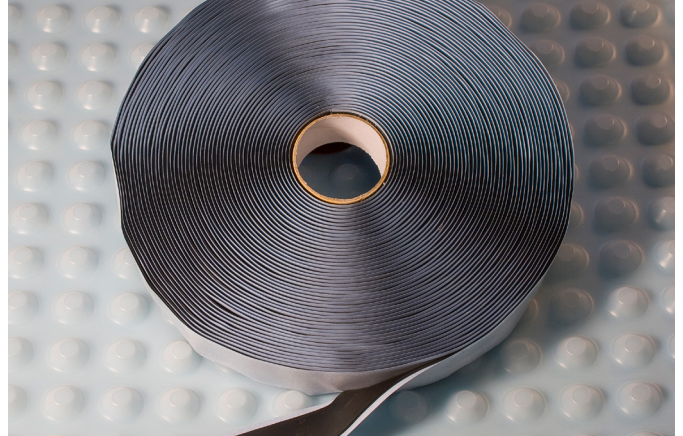
### NEWTON INSULATION FIXINGS (IF90)

Fixing plug to mechanically fix Newton Fibran XPS 500-C insulated spacer to the slab/raft where lightweight floor finishes are to be used. Use 5 fixings per board.



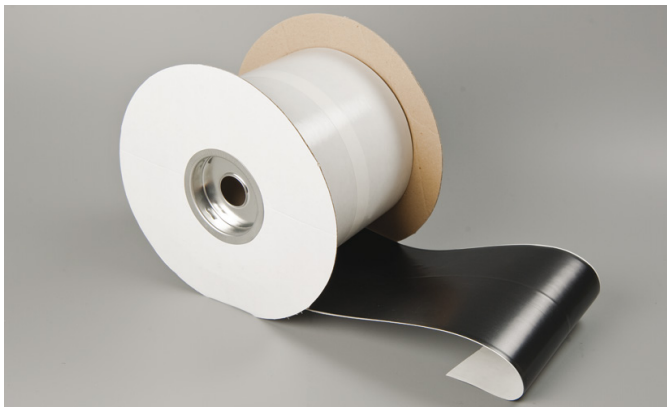
### NEWTON CDM JOINT TAPE (A5)

Double-sided butyl sealing tape used to form a seal at the flanged and stud-into-stud overlap of adjacent sheets of Newton membranes.



### NEWTON CDM OVERTAPE (A7, A8)

A single-sided butyl tape that is used over joints for the Newton PAC radon system but is often used to reinforce joints for non-radon systems, especially around protrusions at 3D detailing.



### NEWTON CDM ROPE (A6)

A 10 mm diameter bead of butyl that is used to form a sealing grommet at the base of the Newton NuSeal Plug for fixing to vaults and soffits.



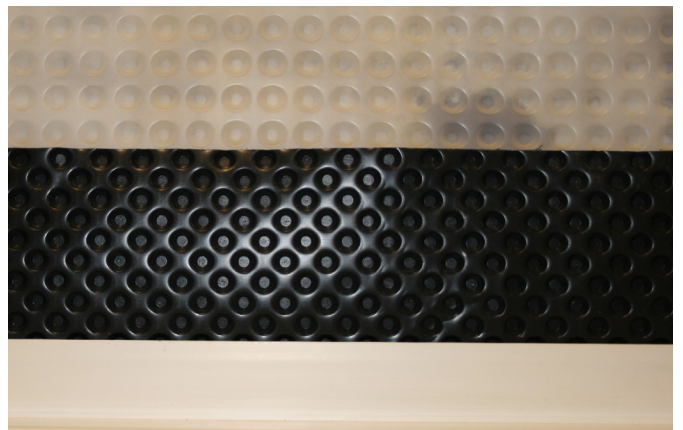
### NEWTONITE MESH TAPE (A25)

A meshed variant of, and used in the same way as, Newton Overtape, but to Newton meshed membranes.



### NEWTON CDM CONDENSATION STRIP (M14)

Forms an 8 mm gap between the Basedrain perimeter drainage channel and wall membrane so that if condensation should form, it will be collected by the Basedrain and not pool on the floor, damaging finishes.



# Newton CDM System

## Ancillaries

### NEWTON SDS DRILL BIT - (DB2 & DB3)

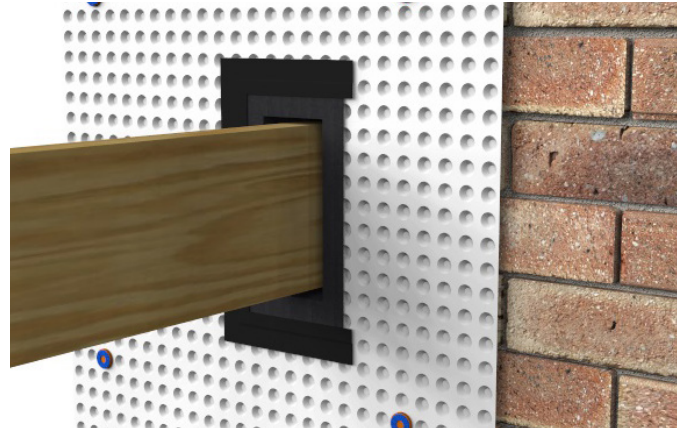
SDS Drill Bits for Newton fixing plugs:

- 10 mm diameter for Newton MultiPlug - Code DB2
- 11 mm diameter for Newton Nuseal Plug - Code DB3



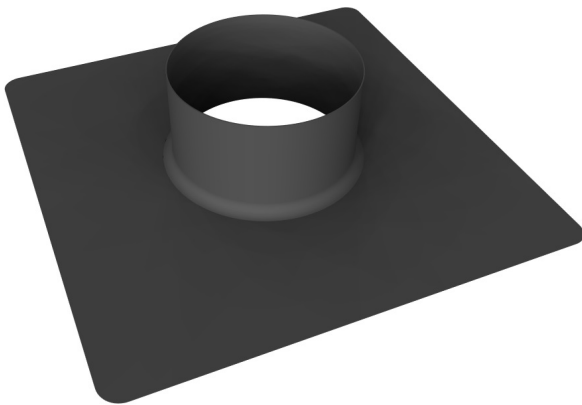
### NEWTONITE JOIST LINER - (BX4)

Made to measure waterproof lining for steel or timber joist ends. Seal to the wall membrane with Newton CDM Tape. Over seal with Newton OverTape or with Newton Mesh Tape to meshed membranes.



### NEWTONITE PIPE SLEEVE - (BX3)

Waterproof sleeve for 110 mm O/D waste pipe entries and protrusions through the wall or floor membrane. Seal to the membrane with Newton CDM Tape. Over seal with Newton OverTape or with Newton Mesh Tape to meshed wall membranes.



### NEWTON CDM 906 LIME INHIBITOR - (906)

Lime inhibitor for application to concrete surfaces. Applied to concrete surfaces prior to the installation of a Newton cavity drain membrane waterproofing system to prevent the 'leaching' of free lime from the concrete.



# Newton CDM System

## Ancillaries

TECHNICAL DATA				
Product	Code	Size	Colour	Packaging
Newton Multiplug	A1 A32 (NSBC only)	10 mm x 57 mm	Blue/Orange Blue/Blue	100 (per bag)
Newton Multiplug (without washers)	A24	10 mm x 57 mm	Blue	100 (per bag)
Newton Helifix Wall Ties	WT (followed by size)	155, 170, 195, 220, 245, 270, 295, 325 (mm)	Stainless Steel	100 (per box)
Newton Nuseal Plugs	A2	70 mm x 11 mm	Blue White	100 (per bag)
Newton Brick Plugs	A3	31 mm x 59.5 mm	Black	100 (per bag)
Newton Multiplug Pin	A4	4 mm x 50 mm	White	100 (per bag)
Newton Insulation Fixings	IF90	10 mm x 90 mm	White	200 (per bag)
Newton CDM Tape	A5	30 mm x 2 mm 22.5 m	Black	Single units
Newton CDM Rope	A6	10 mm x 4.75 m	Black	Single units
Newton Condensation Strip	M14	250 mm x 20 m	Black	Single units
Newton Overtape	A7 A8	150 mm x 20 m 100 mm x 20 m	Black Black	2 4
Newton Mesh Tape	A25	100 mm x 10 m	White	Single units
Newton SDS Drill Bit - 10 mm	DB2	10 mm	N/A	Single units
Newton SDS Drill Bit - 11 mm	DB3	11 mm	N/A	Single units
Newton Pipe Sleeve	BX3	To fit 110 mm pipe	Black	Single units
Newton Joist Liner	BX4	Made to order	Black	Single units
Newton CDM 906 Lime Inhibitor	906	100 m <sup>2</sup> per litre	White	1 Litre

Newton Waterproofing Systems reserve the right to update product literature at any time. Please always refer to our [website](#) for the latest versions.