

Rev 4.2 - 14 November 2016

INTRODUCTION

Newton Basedrain is the drainage system used most commonly within the Newton System 500 waterproofing system.

The drainage system comprises of a range of products that collectively receive water ingressing at weaknesses within the structure and then discharge the collected water to a Newton Sump System or safe drainage (drainage that is below the level of the basement floor that cannot back-up or block):

Newton Basedrain - Drainage conduit for the perimeter of the area to be waterproofed, that is situated at the base of the wall membrane

Newton Floordrain - Drainage conduit for collection of water at the construction joint to the floor and to replace Basedrain at door thresholds. Floordrain is also used to connect the perimeter Basedrain to the sump

Basedrain Corner - Formed 90 degree corner

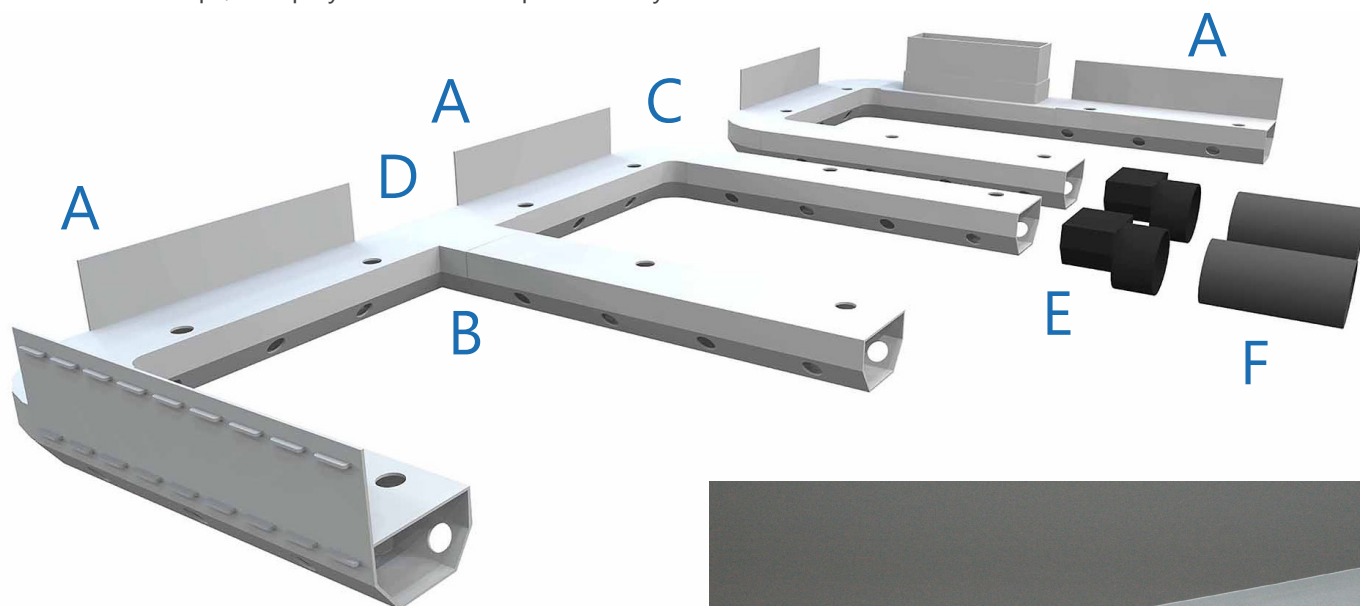
Basedrain T-Piece - Formed T for a 90 degree connection to the Floordrain from the Basedrain

Basedrain Extended T Piece - For draining through engineering brick as an alternative to open perpendicular joints

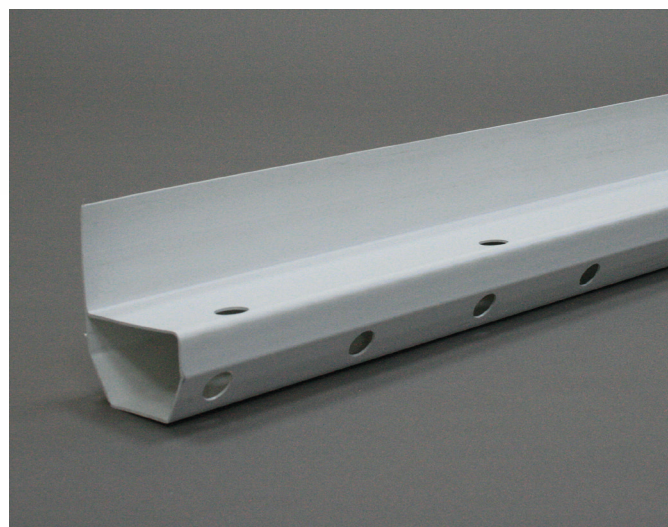
Jetting & Access Point - For inspection and maintenance access to the drainage system

ASSOCIATED PRODUCTS

- Newton wall and floor membranes
- Newton Pumps, Pump Systems and Pump Control Systems



- A. Newton Basedrain - Product Code D1
- B. Newton Floordrain - Product Code D3
- C. Newton Basedrain Corner - Product Code D6
- D. Newton Basedrain T Piece - Product Code D7
- E. Newton Basedrain Adaptor - Product Code D24
- F. 63mm Pipe to connect Drainage Adaptor to Sump or drainage - See price list for pipe codes
- G. Basedrain Inspection Port Pack (not shown) - Product Code D26



NEWTON BASEDRAIN

Drainage System

TECHNICAL DATA

Features	Result	Units
BASEDRAIN		
Width - main body	77	mm
Width - including spacers	84	mm
Height - main body	50	mm
Height - including up-stand	108	mm
Length	2000	mm
Colour	White	
Material	PVC	
Spacer lug depth	3	mm
Unit of sale	Pack of six lengths	
FLOORDRAIN		
H - W - L	50 - 84 - 2000	mm
Unit of sale	Pack of six lengths	
BASEDRAIN CORNER		
H - W - L	50 - 115 - 115	mm
BASEDRAIN 'T' PIECE		
H - W - L	50 - 115 - 115	mm
BASEDRAIN EXTENDED 'T' PIECE		
H - W - L	50 - 200 - 155	mm

SPECIFICATION

John Newton & Company Ltd are in partnership with RIBA NBS who publish details of our products and systems within their specification clause library to allow Architects ease of specification through their NBS Plus interface. NBS clauses can be accessed via the technical resources area of the web site where a live NBS Feed is available at [NBS Plus Live Feed](#)

Our website has drawings available for download in [Technical Drawings](#). A selection are also available via [FastrackCAD](#), as well as a range of BIM objects on the [NBS National BIM Library](#)

HEALTH & SAFETY

Newton Basedrain should only be used as directed within this Data Sheet. There is no legal requirement for a Material Safety Data Sheet (MSDS) for this product. PPE should be worn at all times when working on building sites including eye protection when drilling or fixing. Safety procedures should be adhered to when working at height and working within excavations for your personal protection.

Newton Waterproofing Systems reserve the right to update product literature at any time. Please always refer to our [website](#) for the latest versions.