

# Easi-Fix Lateral Restraint



## Features

- 304 Austenitic Stainless Steel
- Easy and low cost installation
- Minimal disturbance

## Description

Easi-Fix Lateral Restraints are manufactured from 304 Austenitic Stainless Steel rods 8mm in diameter. These are supplied in standard lengths of 1 metre or 1.5 metres.

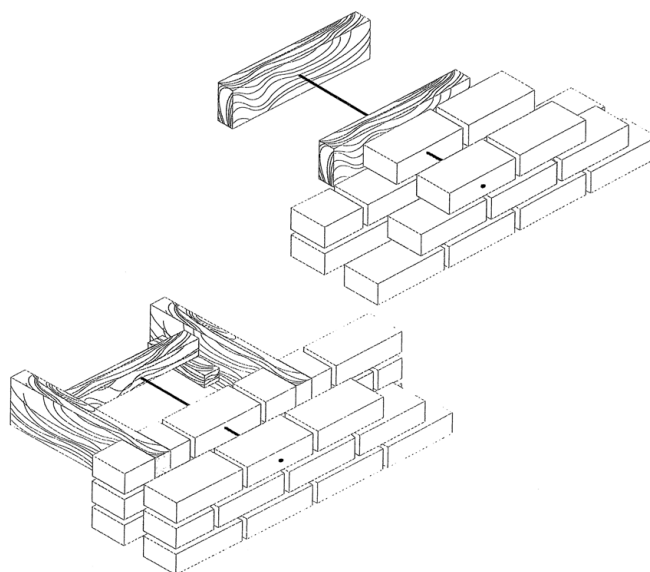
Easi-Fix Lateral Restraints are designed to retain the whole of the brick outer structure to the floor joists.

The process would normally be carried out by using angle straps screwed onto the joists. This has several drawbacks:

- The disturbance caused to the householder is quite considerable.
- The fixing to the joist is only as strong as the shear strength of the screw heads.
- If there is fitted furniture or bathroom suites these have to be removed, which would involve using specialist trades such as joiners and plumbers.

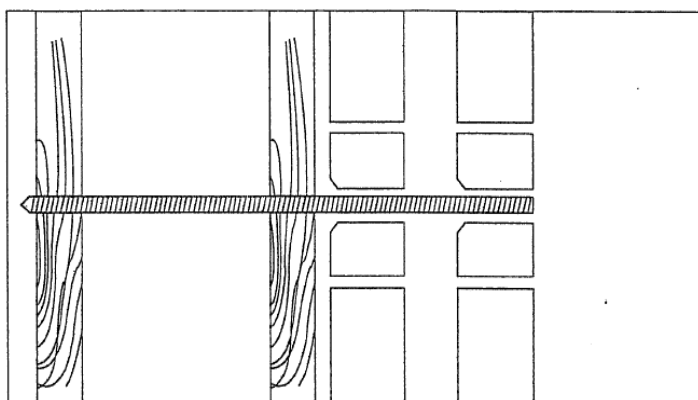
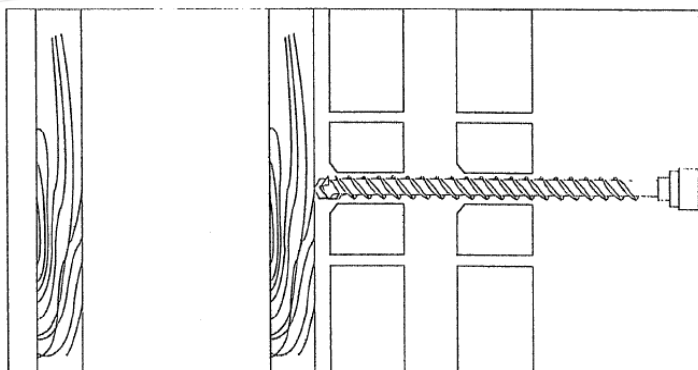
The Easi-Fix Lateral Restraints can be fitted from outside the property with minimum disturbance – in most cases just a lifting of the floorboards to determine the positions of the joists.

The same restraint is used to suit different situations i.e. joists bearing into the wall and joists parallel to the wall.



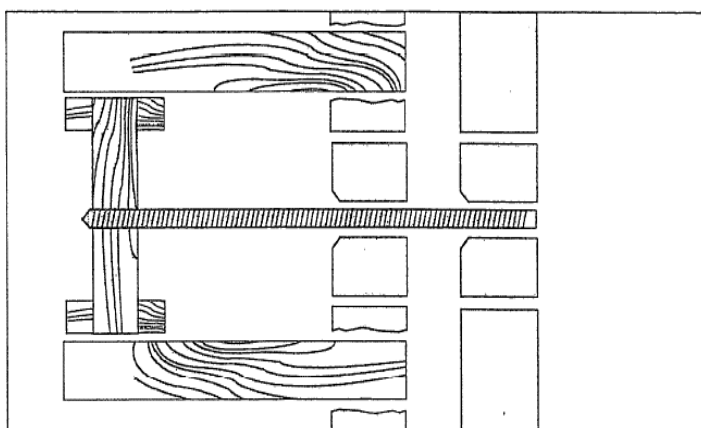
## Installation Method

### Plan - joists parallel to wall



1. Drill a 14mm hole through both brick outer and inner leaf.
  
2. Push the long restraint into the pilot hole and attach the restraint fixing tool provided. The restraint is then slowly wound through the joists leaning the outer end recessed approximately 10-15mm. the outer end can then be tested for strength of fix. Typical test results range from 5Kn – 10Kn. The outer end is then resin bonded into the brickwork and finished off with either mortar or mastic.

### Plan – joists bearing into wall



3. Tools required to fix lateral restraints:
  - 14 x 460mm drill bit
  - Easi-Fix Lateral Restraint Kit
  - Masonry drill
  - 2 x spanners to suit