

# PermaSEAL Fillet Seal



## Description

A high quality, cement based, fast setting mortar designed to be used to create fillet joints at weak points for example at the wall and floor junction. Also PermaSEAL Fillet Seal can be used to rapidly fill and repair broken out areas, deep lying mortar joints and levelling out rough surfaces.

## Advantages

- Simply add clean water on site
- Full surface layers can be applied up to 20mm
- Cracks and indentations can be filled up to 50mm in one application
- Very fast development of strength
- Non shrink - sets crack free
- Resistant to water and frost
- Breathable

## Preparation

All surfaces shall be clean, free of any previous surface coatings and free of dust and residue from the cutting operation.

On dry surfaces, to assist the coating in fully wetting out the substrate, this background should be dampened. Before application the surface should be damp but not wet, any standing water must be removed.

Where the substrate is contaminated with salts it is essential to apply PermaSEAL Salt Inhibitor to the surface as specified before the application of PermaSEAL Tanking or PermaSEAL Fillet Seal (See separate product data sheet). Any live water should be stopped with PermaSEAL Water Plug (see separate product data sheet).

## Mixing

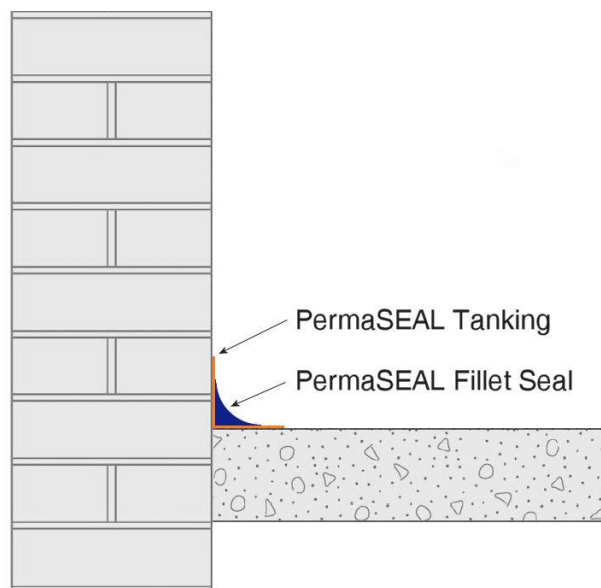
PermaSEAL Fillet Seal is supplied in 25kg units. The water requirement to produce the mortar is 3.5 to 4 litres of clean water per 25kg of dry powder. Add 3.5 to 4 Litre of clean water to a clean mortar tub and add 25kgs of PermaSEAL Fillet Seal. Mix thoroughly for approximately 3 minutes with suitable mechanical mixing equipment until homogeneous. Leave for two minute to stand then mix again briefly before application to surface.

## Creating a fillet joint

This can be achieved in two ways:

### Low risk areas

Fig 1.

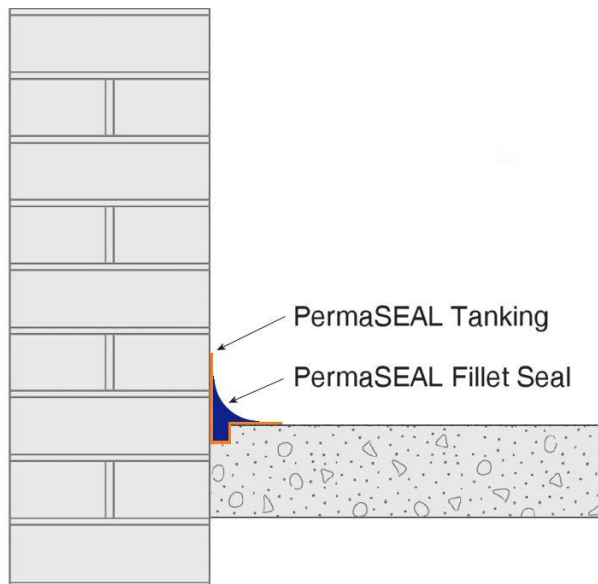


All Permagard products are of a high quality and subject to rigid quality control. The company, however, cannot govern the conditions of usage and application of its products and any warranty, written or implied covers material only. The information contained in this leaflet is given in good faith but no liability can be assumed by the Company for any damage, loss, injury or patent infringement arising from its use.

Follow preparation guidelines, once clean apply a coat of PermaSEAL Tanking to the area 100mm up the wall and 100mm across the floor covering the joint. Whilst still tacky apply PermaSEAL Fillet Seal to the area rounding off the fillet to create a smooth curve across the junction. Allow to dry for at least 1 hour before over coating.

**High risk areas**

Fig 2.



Cut a chase into the floor at the wall floor joint 20mm x 20mm deep cutting into the wall where possible. Then follow the preparation guidelines, once clean apply a coat of PermaSEAL Tanking to the area 100mm up the wall across the chase and 100mm onto the floor. Whilst still tacky apply PermaSEAL Fillet Seal to the area and chase, rounding off the fillet to create a smooth curve across the junction. Allow to dry for at least 1 hours before over coating.

**Application**

Apply to surface with a trowel or fillet tool. Full surface layers can be applied up to 20mm thick. Cracks and indentations can be filled up to 50mm in one application and feather finished. Further coats can be applied once the first coat is dry enough to support further coats.

**Application Notes**

Do not re-temper stiffened material. PermaSEAL Fillet Seal should not be applied to frost filled surfaces or when the temperature is 5°C and falling or 25°C and rising. Lower temperatures lengthen, high temperatures reduce working and setting time.

PermaSEAL Fillet Seal should not be used in situations where structural movement is expected or has previously occurred. (Consult our technical department)

**Curing**

PermaSEAL Fillet Seal is a cement based mortar so will dry with the same characteristics as concrete. It is essential that the coating does not dry too fast as cracking could occur.

When used externally in warm or windy weather, mist spraying must be used to compensate for moisture loss. If the mortar dries too quickly then cracking may occur.

Initial Set @ 20°C = 60 minutes

Working Time @ 20°C = Up to 30 minutes

**Coverage**

1.7kg as a filler per litre void or per mm thick layer/m<sup>2</sup> and approx. 2-3kg linear metre as a fillet seal.

**Storage and Shelf Life**

PermaSEAL Fillet Seal has a shelf life of 12 months in buckets when kept in dry conditions at a temperature of 5°C to 25°C.

**Packaging**

25Kg Buckets

**Health and Safety**

Please refer to latest health and safety data sheet.

All Permagard products are of a high quality and subject to rigid quality control. The company, however, cannot govern the conditions of usage and application of its products and any warranty, written or implied covers material only. The information contained in this leaflet is given in good faith but no liability can be assumed by the Company for any damage, loss, injury or patent infringement arising from its use.